

KELLOGG MIDDLE SCHOOL
PORTLAND PUBLIC SCHOOLS

Design Advisory Group Project Review
JUNE 14, 2018



Agenda



1. **Timeline**
2. **Demolition Status**
3. **Building Design**
4. **Site**
5. **Program & Learning Environments**
6. **Budget**



Timeline

Demolition Completed: August 2018

Design Development Completed: August 2018

Conditional Use Anticipated: September 2018

Construction Documents Completed: January 2019

Permitting & Bidding Completed: June 2019

Construction: June 2019 – January 2021

Move-In, Training & Occupy: January 2021 – Fall 2021



School Starts: Fall 2021



KELLOGG MIDDLE SCHOOL
PORTLAND PUBLIC SCHOOLS



Demolition



KELLOGG MIDDLE SCHOOL
PORTLAND PUBLIC SCHOOLS



Demolition



KELLOGG MIDDLE SCHOOL
PORTLAND PUBLIC SCHOOLS



Demolition



KELLOGG MIDDLE SCHOOL
PORTLAND PUBLIC SCHOOLS

Oh

Demolition



KELLOGG MIDDLE SCHOOL
PORTLAND PUBLIC SCHOOLS



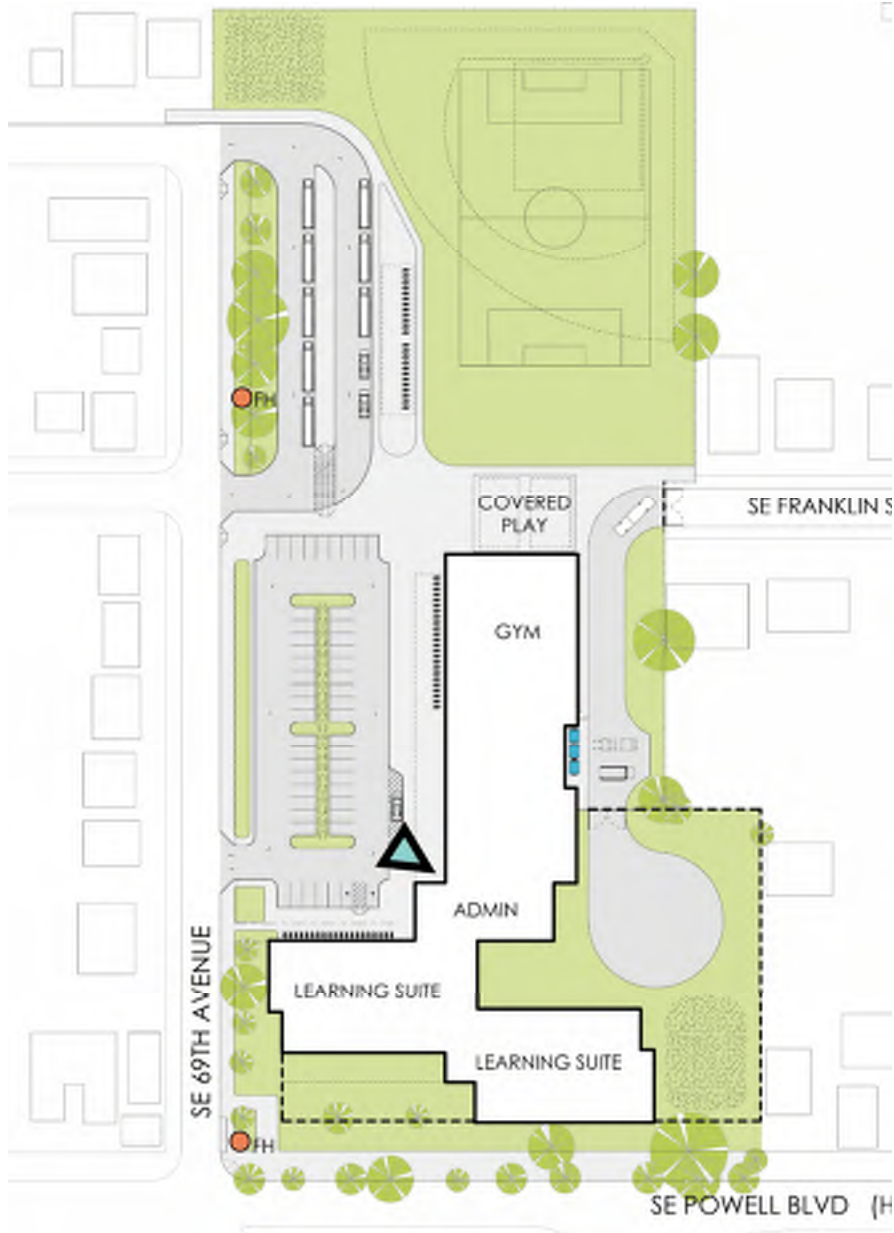


KELLOGG MIDDLE SCHOOL
PORTLAND PUBLIC SCHOOLS



05.00.18

SD – Jan 2018



DD – June 2018



Site Plan

First Floor Plan

Gym Entry →

Main Entry →



- BUILDING PROGRAM**
- ADMINISTRATION
 - BUILDING SUPPORT
 - CAFETERIA/COMMONS
 - CIRCULATION
 - COMMUNITY
 - CORE CLASSROOM
 - EXPLORATORY
 - GYM
 - SPECIAL EDUCATION

First Floor Plan

Main Entry

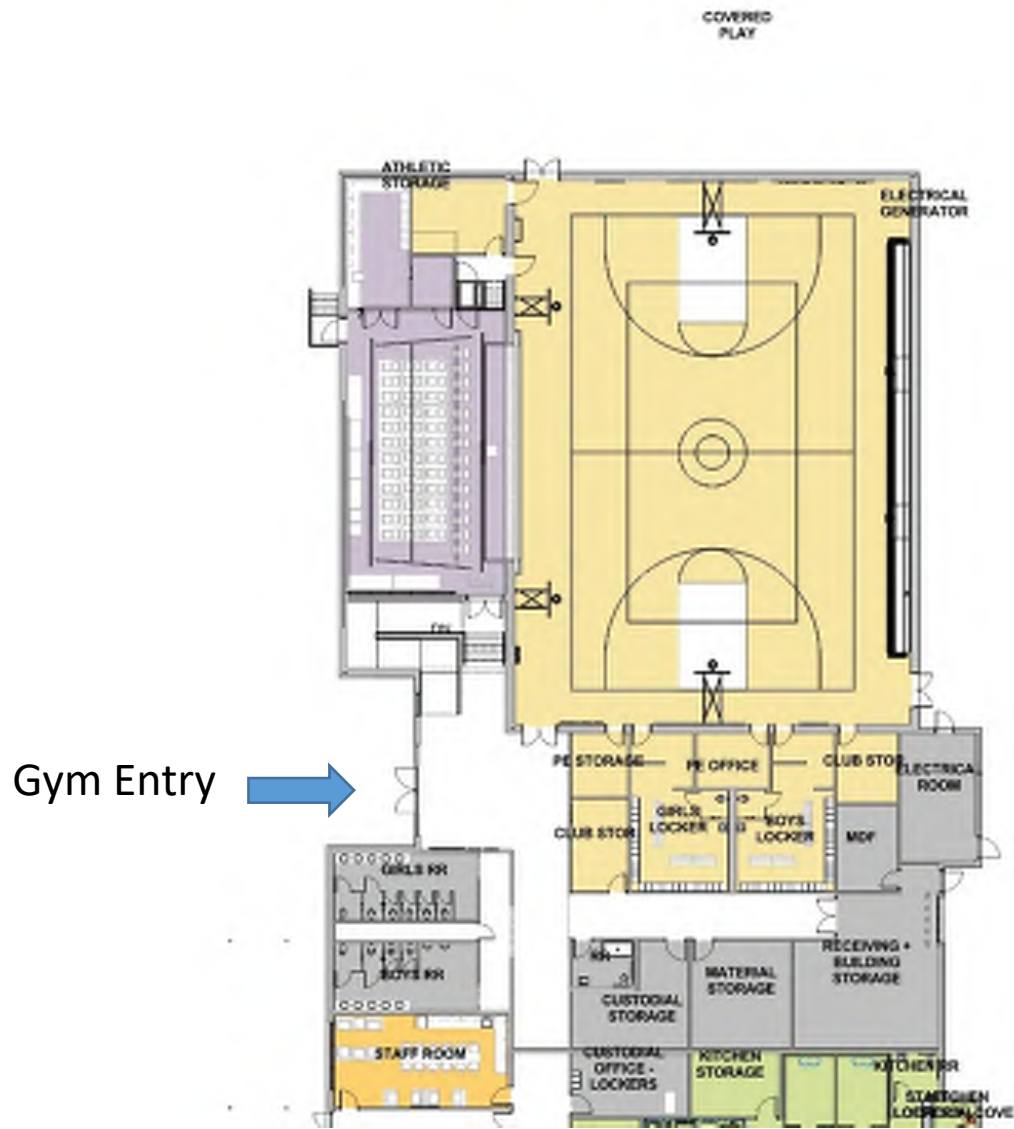


First Floor Plan



- BUILDING**
- ADMINIS
 - BUILDIN
 - CAFETE
 - CIRCUL
 - COMMU
 - CORE C
 - EXPLOF
 - GYM
 - SPECIA

First Floor Plan





Third Floor Plan



Second Floor Plan

Developing Learning Spaces

Classrooms contributing to capacity

- 22 standard classrooms
- 5 science classrooms
- 1 ESL classroom
- 2 gym classes in gymnasium

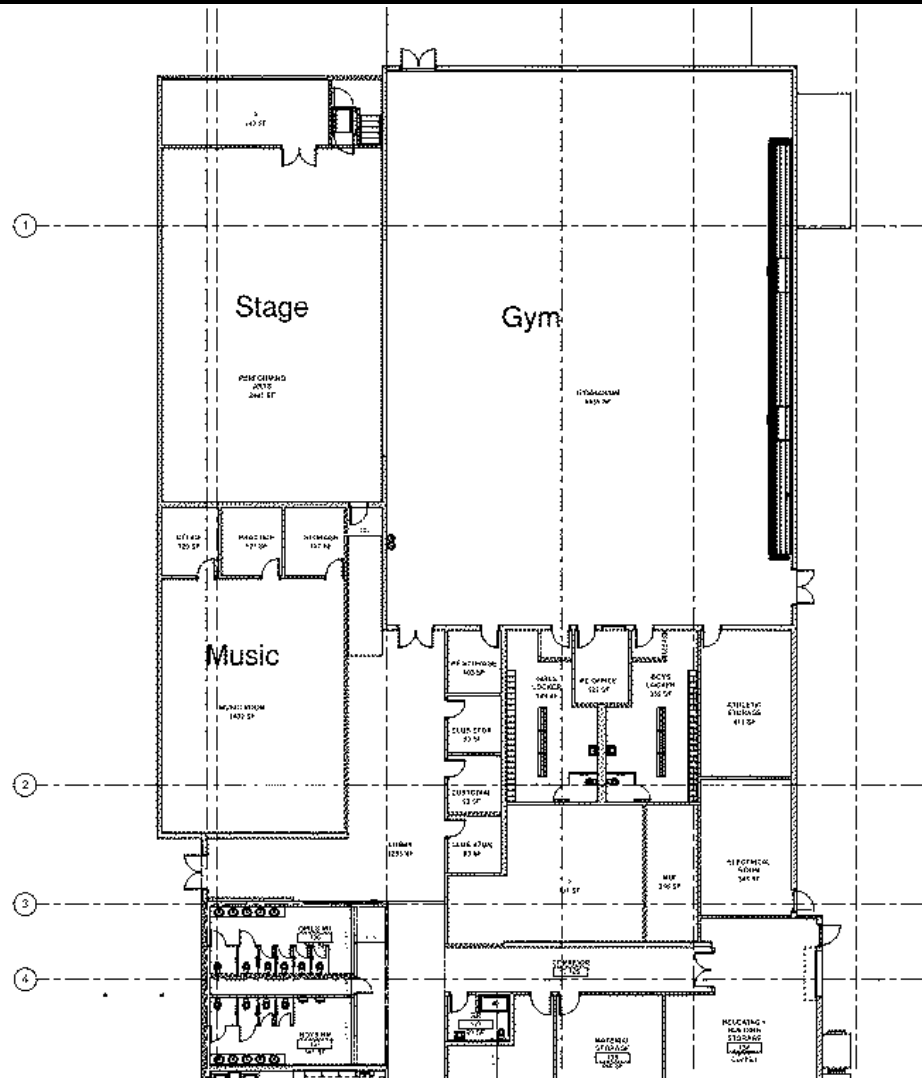
Non-capacity contributing instructional spaces include

- 2 exploratory learning spaces
- 1 music room
- 1 art room
- 1 ESTEAM (makers space) lab
- 1 SPED learning center
- 1 SPED intensive skills
- 1 SPED sensory support rooms + 1 SPED quiet room
- media center
- cafeteria/commons



6-12-2018 Board of Education feedback

Determine the cost to the Dance Classroom back in the design.



KELLOGG MIDDLE SCHOOL
PORTLAND PUBLIC SCHOOLS



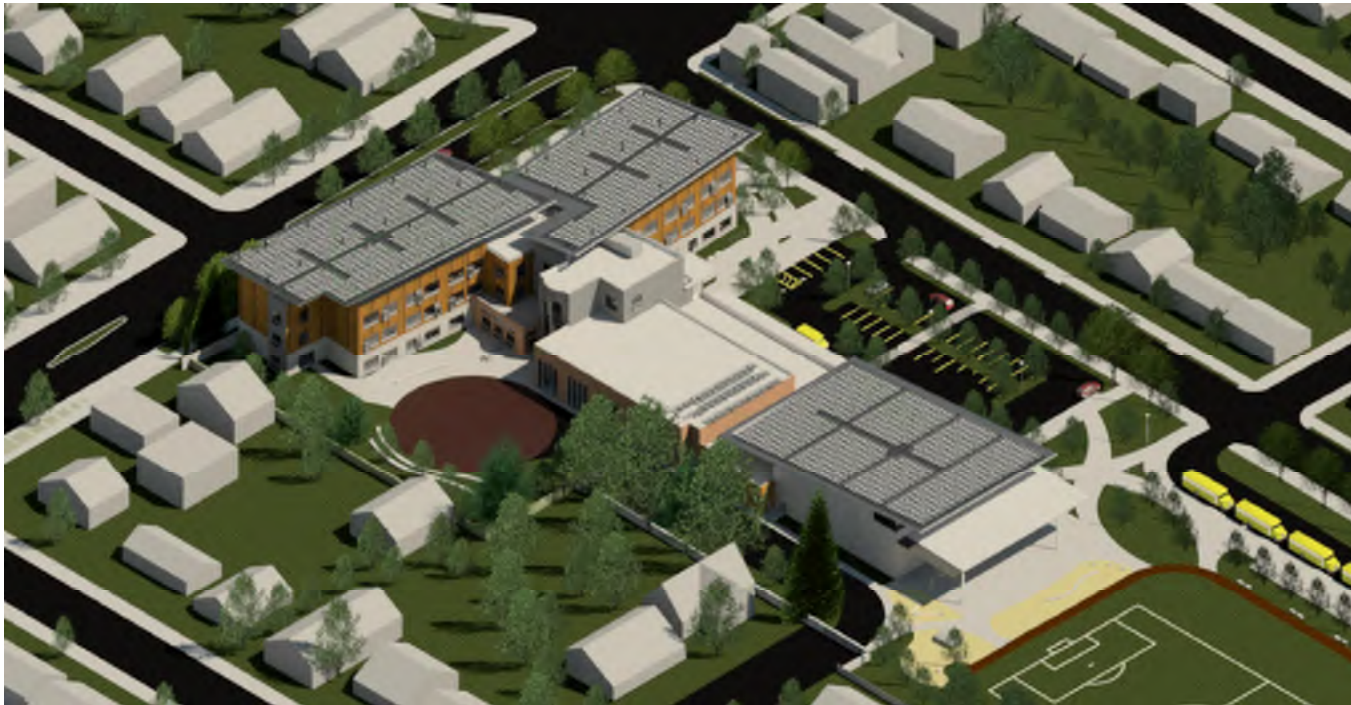
Building Added Value

Resiliency:

100% of Kellogg Middle School is designed to Risk Category IV:
Immediate Occupancy

Sustainability:

Kellogg Middle School is on target to achieve LEED Gold.
An approach to be a Net Zero Energy (NZE) building is a bid alternate



KELLOGG MIDDLE SCHOOL
PORTLAND PUBLIC SCHOOLS



Project Scope & Budget Update

Total Project Budget: \$45,000,000
 Construction Budget: \$33,725,000

Capacity 680 - 746

	BUILDING AREA	COST	\$/SF
PROGRAM	100,412 SF	\$32,920,000	\$328
SD	123,400 SF	\$46,738,000	\$379/SF
SD Reconciled	99,000 SF	\$35,364,000 less \$2,500,000 alternates =\$32,864,000	\$357/SF
DD	104,028 SF	July 2018	July 2018

Schematic Design (SD) Reconciliation

- Reduce from 4-story to 3-story
- Reduce “preferred” spaces (dance)
- Reduce extended learning spaces
- Tighten up classrooms areas to 900 sf
- Grass field in lieu of turf
- Reduce bus/parking area



Main Entry



KELLOGG MIDDLE SCHOOL
PORTLAND PUBLIC SCHOOLS



Vestibule



KELLOGG MIDDLE SCHOOL
PORTLAND PUBLIC SCHOOLS



Commons



KELLOGG MIDDLE SCHOOL
PORTLAND PUBLIC SCHOOLS



Commons



KELLOGG MIDDLE SCHOOL
PORTLAND PUBLIC SCHOOLS



Media Center – 1st Floor near Main Entry



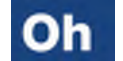
KELLOGG MIDDLE SCHOOL
PORTLAND PUBLIC SCHOOLS



Extended Learning – 1st Floor



KELLOGG MIDDLE SCHOOL
PORTLAND PUBLIC SCHOOLS



Learning Garden



KELLOGG MIDDLE SCHOOL
PORTLAND PUBLIC SCHOOLS



Extended Learning: 2nd & 3rd Floor



KELLOGG MIDDLE SCHOOL
PORTLAND PUBLIC SCHOOLS

Oh

27

Classroom



KELLOGG MIDDLE SCHOOL
PORTLAND PUBLIC SCHOOLS



Science Classroom



KELLOGG MIDDLE SCHOOL
PORTLAND PUBLIC SCHOOLS



Gym



KELLOGG MIDDLE SCHOOL
PORTLAND PUBLIC SCHOOLS





KELLOGG MIDDLE SCHOOL
PORTLAND PUBLIC SCHOOLS



Questions & Comments

